

SKYSCREEN 3% ALU

- ✓ Exceptionally high solar reflection, Rs up to 85%
- ✓ Good glare control
- ✓ Thin and light fabric

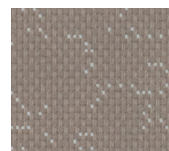
Openness factor: 3%
 Composition: 100% polyester
 Weight: 270 g/m²
 Thickness: 0,40 mm
 Roll size: 42 m
 Width: 290 cm
 Flameretardant: B1 / C1 / Bs2d0



11201 artic snow



11211 canvas



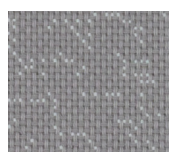
11206 rustic taupe



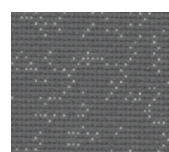
10090 black marble



11202 classic silver



11203 siltstone



11204 slate grey



11205 graphic charcoal

Bedömd av:
 SundaHus
 Byggsvarbedömningen



SUNCONTROL PROPERTIES													
	THERMAL FACTORS					OPTICAL FACTORS							
	Fabric		Fabric+Glazing G tot internal			Fabric							
	Rs	Ts	Glazing F G tot	Glazing G G tot	Glazing H G tot	Tv	Tv dir	Tv diff	Tuv	Glare Control Class	Night Privacy Class	Visual Contact Class	Daylight Utilisation Class
10090	82	3	0,23	0,10	0,22	2,8	2,5	0,3	3	3	2	2	0
11201	85	2	0,21	0,09	0,21	2,3	1,7	0,6	3	3	2	2	0
11202	82	2	0,23	0,10	0,22	1,6	1,1	0,5	2	3	2	2	0
11203	83	3	0,22	0,09	0,21	3,1	2,6	0,5	3	3	2	2	0
11204	85	2	0,21	0,08	0,21	2,2	1,9	0,3	3	3	2	2	0
11205	84	2	0,22	0,09	0,22	2,4	2,1	0,3	2	3	2	2	0
11206	84	3	0,22	0,09	0,22	2,8	2,4	0,4	2	3	2	2	0
11211	83	3	0,22	0,09	0,22	2,7	2,1	0,6	3	3	2	2	0

Rs = Solarreflection
 Percentage of sun energy that is reflected by the fabric.

Ts = Solartransmission
 Percentage of sun energy that comes through the fabric.

Tv = Lighttransmission
 Percentage of sun light that comes through the fabric.

Glazing F = Double glazing (4/16/4) space filled with 90% argon, C=0,64 U=1,1 low e coating in pos.3 according to EN 14501:2021

Glazing G = Solar control glazing (6/16/4) space filled with 90% argon, C=0,33 U=1,0 according to EN 14501:2021

Glazing H = Triple glazing (4/12/4/12/4) space filled with 90% argon, C=0,53 U=0,7 low e coating in pos.2 and pos.5 according to EN 14501:2021

Tv dir = Normal/normal light transmittance (direct)

Tv diff = Normal/diffuse light transmittance

Tuv = UV transmission

0 = Very little effect

1 = Little effect

2 = Moderate effect

3 = Good effect

4 = Very good effect

Data measured according to EN 410:2011 and EN 14500:2008

Classification of thermal and visual characteristics according to EN 14501:2021

Gtot were determined in IDA-ESBO (EQUA simulation) according to EN ISO 52022-3 (reference-case) EN 410 and ISO 15099

TECNICAL PROPERTIES		
Openess factor	3%	EN 14500
Composition	100% polyester	-
Weight	270 gr / m ²	EN 12127
Thickness	0,40 mm	EN ISO 5084
FIRE CLASSIFICATIONS		
Europe	Bs2d0 / C1	UNE EN 13501 / EN 13773
France		NF P92-503
Italy		UNI 9177
Germany	B1	DIN 4102
UK		BS 5867
USA		NFPA 701
Wheelmark		IMO resolution MSC.307(88) – (2010 FTP Codeland IMO MSC / Circ.1102
Acoustic Absorption	G-100 / $\alpha_w = 0,23$ / NRC = 0,15	EN 354/EN 11654/ASTM C423
Lightfastness	7	EN ISO 105 B02
Breaking resistance	Warp: >120 daN / Weft: >100 daN	EN ISO 13934
Elongation to break	Warp: approx.30% Weft: approx.35%	EN ISO 13934
Tearing strenght		EN ISO 13937
SundaHus	bedömd	sundahus.se
Byggvarubedömingen	bedömd	byggvarubedomningen.se
MANUFACTURING GUIDANCE		
Cutable in both directions / Coldcut (A tendence of cupping can always occur railroaded) Weldable		
CARE INSTRUCTIONS		
Brush off / Vacuum clean for regular maintenance Do not wash, rub or steam Do not dry clean		
SUITABLE FOR MOIST ATMOSPHERE		
no		

MORE QUESTIONS? WE HAVE THE ANSWERS!

If you would like to know more about our products, please contact:

Technical Manager for commercial buildings:

Michael Markert-Johansson

michael@sandatex.se

033-720 62 69

FABRIC SAMPLES FOR FREE – WE’LL SEND THEM TO YOU!

With us, you can easily order fabric samples directly through our website.

Perfect for ensuring that your fabric choice matches your vision.

Feel free to order at sandatex.se