

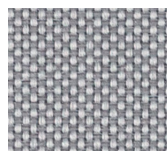
SILKSHADE 3% ALU

- ✓ Good glare protection in most colors
- ✓ Good acoustic absorption
- ✓ Nice textile appearance

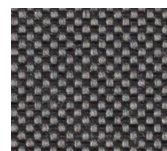
Openness factor: 3%
 Composition: 100% trevira CS
 Weight: 160 g/m²
 Thickness: 0,37 mm
 Roll size: 40 m
 Width: 240 / 290 cm
 Flameretardant: B1 / M1 / C1 /
 NFPA 701 / Bs1d0



10943 snow



10941 grey haze



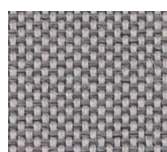
7183 hot stone



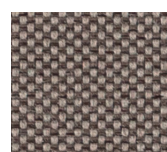
7033 charcoal



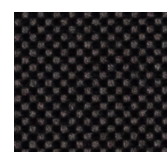
10942 ivory



10940 cashmere



10939 dusty fawn



7172 rich black

Bedömd av:
 SundaHus
 Byggsvarubedömningen



SUNCONTROL PROPERTIES

	THERMAL FACTORS					OPTICAL FACTORS							
	Fabric		Fabric+Glazing G tot internal			Fabric							
	Rs	Ts	Glazing F G tot	Glazing G G tot	Glazing H G tot	Tv	Tv dir	Tv diff	Tuv	Glare Control Class	Night Privacy Class	Visual Contact Class	Daylight Utilisation Class
7033	54	7	0,39	0,19	0,35	4,1	3,0	1,1	3	3	2	2	0
7172	53	6	0,39	0,19	0,35	2,9	2,4	0,5	3	3	2	2	0
7183	57	6	0,38	0,18	0,34	3,8	2,8	1,0	4	3	2	2	0
10939	53	6	0,39	0,19	0,35	4,2	3,2	1,0	4	1	2	2	0
10940	56	6	0,38	0,18	0,34	4,1	2,5	1,6	4	3	2	2	0
10941	56	7	0,38	0,18	0,34	5,6	2,8	2,8	5	3	2	2	1
10942	56	7	0,38	0,18	0,34	7,0	2,6	4,4	5	2	2	1	1
10943	59	9	0,36	0,17	0,33	8,5	2,8	5,7	8	2	2	1	1

Rs = Solarreflection
 Percentage of sun energy that is reflected by the fabric.

Ts = Solartransmission
 Percentage of sun energy that comes through the fabric.

Tv = Lighttransmission
 Percentage of sun light that comes through the fabric.

Glazing F = Double glazing (4/16/4) space filled with 90% argon, C=0,64 U=1,1 low e coating in pos.3 according to EN 14501:2021

Glazing G = Solar control glazing (6/16/4) space filled with 90% argon, C=0,33 U=1,0 according to EN 14501:2021

Glazing H = Triple glazing (4/12/4/12/4) space filled with 90% argon, C=0,53 U=0,7 low e coating in pos.2 and pos.5 according to EN 14501:2021

Tv dir = Normal/normal light transmittance (direct)

Tv diff = Normal/diffuse light transmittance

Tuv = UV transmission

0 = Very little effect

1 = Little effect

2 = Moderate effect

3 = Good effect

4 = Very good effect

Data measured according to EN 410:2011 and EN 14500:2008

Classification of thermal and visual characteristics according to EN 14501:2021

Gtot were determined in IDA-ESBO (EQUA simulation) according to EN ISO 52022-3 (reference-case) EN 410 and ISO 15099

TECNICAL PROPERTIES		
Openess factor	3%	EN 14500
Composition	100% trevira CS	-
Weight	160 gr / m ²	EN 12127
Thickness	0,37 mm	EN ISO 5084
FIRE CLASSIFICATIONS		
Europe	Bs1d0 / C1	UNE EN 13501 / EN 13773
France	M1*	NF P92-503
Italy		UNI 9177
Germany	B1	DIN 4102
UK		BS 5867
USA	Pass	NFPA 701
Wheelmark		IMO resolution MSC.307(88) – (2010 FTP Codeland IMO MSC / Circ.1102
Acoustic Absorption	E-200 / $\alpha_w = 0,3$ / NRC = 0,25	EN 354/EN 11654/ASTM C423
Lightfastness	7	EN ISO 105 B02
Breaking resistance	Warp: >95 daN / Weft: >60 daN	EN ISO 13934
Elongation to break	Warp: approx.25% Weft: approx.25%	EN ISO 13934
Tearing strenght		EN ISO 13937
SundaHus	bedömd	sundahus.se
Byggvarubedömingen	bedömd	byggvarubedomningen.se
MANUFACTURING GUIDANCE		
Fabric length to drop / Ultrasonic Railroading possible but cupping can occur To manufacture with welding agent		
CARE INSTRUCTIONS		
Brush off / Vacuum clean for regular maintenance Do not wash, rub or steam Do not dry clean		
SUITABLE FOR MOIST ATMOSPHERE		
no		

* confirmed by Trevira GmbH

MORE QUESTIONS? WE HAVE THE ANSWERS!

If you would like to know more about our products, please contact:

Technical Manager for commercial buildings:

Michael Markert-Johansson

michael@sandatex.se

033-720 62 69

FABRIC SAMPLES FOR FREE – WE’LL SEND THEM TO YOU!

With us, you can easily order fabric samples directly through our website.

Perfect for ensuring that your fabric choice matches your vision.

Feel free to order at sandatex.se