

APOLLO BO

- ✓ 100% Blackout (100 000 Lux)
- ✓ Excellent dimensional stability, especially for larger blinds.
- ✓ Internal ZIP in large widths possible

Openness factor: 0%

Composition: 100% polyester

Weight: 430 g/m²

Thickness: 0,55 mm

Roll size: 25 m

Width: 310 cm (410 cm on demand)

Flameretardant: B1 / C1 / NFPA 701



4898 snow



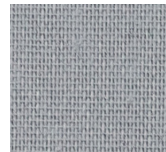
4899 perfect greige



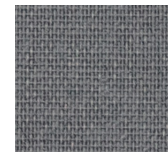
10331 stone



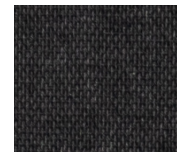
5108 grey haze



5770 french grey



6625 new york grey



10355 midnight black

Bedömd hos:
SUNDAHUS
BYGGVARUBEDÖMNINGEN



SUNCONTROL PROPERTIES

	THERMAL FACTORS					OPTICAL FACTORS							
	Fabric		Fabric+Glazing G tot internal			Fabric							
	Rs	Ts	Glazing F G tot	Glazing G G tot	Glazing H G tot	Tv	Tv dir	Tv diff	Tuv	Glare Control Class	Night Privacy Class	Visual Contact Class	Daylight Utilisation Class
4898	66	0	0,28	0,11	0,26	0,0	0,0	0,0	0	4	4	0	0
4899	66	0	0,28	0,11	0,26	0,0	0,0	0,0	0	4	4	0	0
5108	66	0	0,28	0,11	0,26	0,0	0,0	0,0	0	4	4	0	0
5770	66	0	0,28	0,11	0,26	0,0	0,0	0,0	0	4	4	0	0
6625	66	0	0,28	0,11	0,26	0,0	0,0	0,0	0	4	4	0	0
10331	66	0	0,28	0,11	0,26	0,0	0,0	0,0	0	4	4	0	0
10355	80	0	0,22	0,08	0,21	0,0	0,0	0,0	0	4	4	0	0

Rs = Solarreflection

Andel totalt ljus som reflekteras bort

Ts = Solartransmission

Andel totalt ljus som går igenom väven

Tv = Lighttransmission

Andel synligt ljus som går igenom väven

Glazing F = Double glazing (4/16/4) space filled with 90% argon, G=0,64 U=1,1 low e coating in pos.3 according to EN 14501:2021

Glazing G = Solar control glazing (6/16/4) space filled with 90% argon, G=0,33 U=1,0 according to EN 14501:2021

Glazing H = Triple glazing (4/12/4/12/4) space filled with 90% argon, G=0,53 U=0,7 low e coating in pos.2 and pos.5 according to EN 14501:2021

Tv dir = Normal/normal light transmittance (direct)

Tv diff = Normal/diffuse light transmittance

Tuv = UV transmission

0 = Very little effect

1 = Little effect

2 = Moderate effect

3 = Good effect

4 = Very good effect

Data measured according to EN 410:2011 and EN 14500:2008

Classification of thermal and visual characteristics according to EN 14501:2021

Gtot were determined in IDA-ESBO (EQUA simulation) according to EN ISO 52022-3 (reference-case) EN 410 and ISO 15099

TECNICAL PROPERTIES		
Openess factor	0%	EN 14500
Composition	100% polyester	
Weight	430 gr/m ²	EN 12127
Thickness	0,55 mm	EN ISO 5084
FIRE CLASSIFICATIONS		
Europe	- / C1	UNE EN 13501 / EN 13773
France		NF P92-503
Italy		UNI 9177
Germany	B1	DIN 4102
UK		BS 5867
USA	pass	NFPA 701
Wheelmark		IMO resolution MSC.307(88) – (2010 FTP Codeland IMO MSC / Circ.1102
Acoustic Absorption	$\alpha_w = 0,05$ / NRC = 0,00	EN 11654/ASTM C423
Lightfastness	7	EN ISO 105 B02
Breaking resistance	Warp: >80 daN / Weft: >130 daN	EN ISO 13934
Elongation to break	Warp: approx.17% Weft: approx.24%	EN ISO 13934
Tearing strenght		EN ISO 13937
SundaHus	bedömd	sundahus.se
Byggvarubedömingen	bedömd	byggvarubedomningen.se
MANUFACTURING GUIDANCE		
Cuttable in both directions / Coldcut (A tendence of cupping can always occur railroaded) Conditionally weldable / Welding agent recommended		
CARE INSTRUCTIONS		
Brush off / Vacuum clean for regular maintenance Wipe gently with a soft humid sponge/towel Do not wash, rub or steam Do not dry clean		
SUITABLE FOR MOIST ATMOSPHERE		
yes		

MORE QUESTIONS? WE HAVE THE ANSWERS!

If you would like to know more about our products, please contact:

Technical Manager for commercial buildings:

Michael Markert-Johansson

michael@sandatex.se

033-720 62 69

FABRIC SAMPLES FOR FREE – WE’LL SEND THEM TO YOU!

With us, you can easily order fabric samples directly through our website.

Perfect for ensuring that your fabric choice matches your vision.

Feel free to order at **sandatex.se**