

TECNO

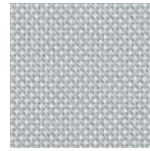
✓ Nice textile appearance

✓ Very good acoustic properties

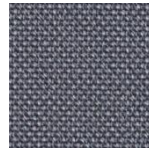
Openness factor: 2%
 Composition: 100% Trevira CS
 Weight: 250 g/m²
 Thickness: 0,49 mm
 Fire reaction: M1 / B1 / C1 / Bs1d0
 / NFPA 701



100 ultra white



6080 silver



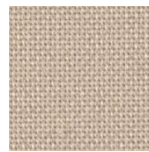
6083 deep grey



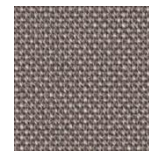
6090 rich black



7571 champagne



6078 tan



10324 dusty fawn



SUNCONTROL PROPERTIES

	THERMAL FACTORS					OPTICAL FACTORS							
	Fabric		Fabric+Glazing G tot internal			Fabric							
	Rs	Ts	Glazing C G tot	Glazing D G tot	Glazing E G tot	Tv	Tv dir	Tv diff	Tuv	Glare Control Class	Night Privacy Class	Visual Contact Class	Daylight Utilisation Class
100	58	40	0,39	0,22		41,8	2,8	39	38	1	2	0	3
6078	52	30	0,40	0,22		25,7	4,6	21,1	14	1	2	0	2
6080	55	33	0,40	0,22		29,6	4,7	24,9	24	1	2	0	2
6083	40	23	0,44	0,24		9,8	2,8	7	8	1	2	1	1
6090	29	19	0,46	0,26		3,3	2,8	0,5	3	3	2	2	1
7571	59	38	0,39	0,21		40	2,6	37,4	37	1	2	0	3
10324	42	24	0,43	0,24		11,1	2,3	8,8	10	1	2	1	2

0 Very little effect
1 Little effect

2 Moderate effect

3 Good effect
4 Very good effect

Ts

Solartransmission

Rs

Solarreflection

Glazing C

Double glazing (4/16/4) space filled with air G=0,59 according to EN 14501:2005

Glazing D

Double glazing (4/16/4) with low emissivity coating in position 2, space filled with argon G=0,32 according to EN 14501:2005

Glazing E

Lighttransmission

Tv

Normal/normal light transmittance (direct)

Tv dir

Normal/diffuse light transmittance

Tv diff

UV transmission

Tuv

Data measured according to EN 410:2011 and EN 14500:2008

Classification of thermal and visual characteristics according to EN 14501:2005

Gtot were determined in IDA-ESBO according to EN ISO 52022-3 (reference-case) EN 410 and ISO 15099

TECHNICAL PROPERTIES		
Openness factor	2%	EN 14500
Composition	100% Trevira CS	-
Weight	250 gr/m ²	EN 12127
Thickness	0,49 mm	EN ISO 5084
Fire classifications		
Europe	Bs1d0 C1	UNE EN 13501 EN 13773
France	M1	NF P92-503
Italy		UNI 9177
Germany	B1	DIN 4102
UK	Pass*	BS 5867
USA	Pass	NFPA 701
Wheelmark		IMO resolution MSC.307(88)-(2010 FTP Codeland IMO MSC Circ.1102
Acoustic Absorption	G-200 / $\alpha_w = 0,45$ / NRC =0,45	EN 354/EN 11654/ASTM C423
Lightfastness	Min.5	EN ISO 105 B02
Breaking resistance	Warp: >140 daN weft:120 daN	EN ISO 13934
Elongation to break	Warp: 30% weft: 35%	EN ISO 13934
Tearing strength	-	EN ISO 13937
SundaHus	B	sundahus.se
Byggarbedömingen	accepteras	byggvarubedomningen.se

*confirmed by Trevira GmbH

WIDTH: 240 / 305 cm

ROLL SIZE: 40 m

MANUFACTURING GUIDANCE:

Fabric length to drop / Ultrasonic

CARE INSTRUCTIONS:

Vacuum clean for regular maintenance

Brush off, Wipe gently with a damp cloth

Do not wash, rub or steam

Do not dry clean

SUITABLE FOR MOIST ATMOSPHERE: Yes

ENVIRONMENT

The SCS Indoor Advantage™ Gold certificate states a test regarding harmful emissions of fabrics and products in the interior.

Fabrics certified by SCS contribute to a better room air quality. It is comparable to Greenguard certificate