

# STARSCREEN 3-4%

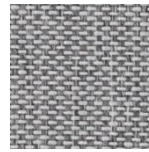
✓ PVC-free outdoor screen

✓ Suitable for all kind of installations

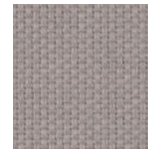
Openness factor: 3-4%  
 Composition:  
 100% solution dyed PET  
 Weight: 220 g/m<sup>2</sup>  
 Thickness: 0,52 mm  
 Fire reaction: M1 / B1 / C1



8015/400



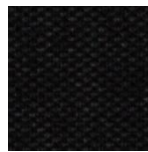
8197/415



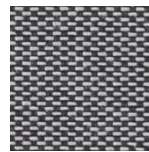
8079/400



8929/400



8024/400



8097/415



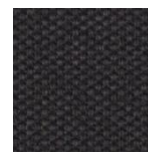
8293/493



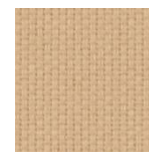
8592/492



8971/497



8097/400



8090/400

REACH  
compliant



## SUNCONTROL PROPERTIES

	THERMAL FACTORS					OPTICAL FACTORS							
	Fabric		Fabric+Glazing G tot internal			Fabric				Glare Control Class	Night Privacy Class	Visual Contact Class	Daylight Utilisation Class
	Rs	Ts	Glazing F G tot	Glazing G G tot	Glazing H G tot	Tv	Tv dir	Tv diff	Tuv				
8015/400	50	38	0,26	0,14	0,21	39,8	3,5	36,3	4	0	2	0	3
8024/400	3	4	0,04	0,03	0,03	3,6	3,4	0,2	4	1	2	2	0
8079/400	28	20	0,14	0,07	0,11	17,3	4,1	13,2	4	0	2	1	2
8090/400	42	29	0,20	0,09	0,15	23,4	4,2	19,3	4	0	2	0	2
8097/400	9	8	0,06	0,04	0,05	5,9	3,7	2,2	4	1	2	2	1
8097/415	21	13	0,09	0,06	0,07	11,2	3,4	7,8	4	0	2	1	1
8197/415	31	20	0,14	0,07	0,10	17,5	3,4	14,1	4	0	2	1	2
8293/493	14	9	0,07	0,04	0,05	7,3	2,9	4,4	3	2	2	1	1
8592/492	14	9	0,07	0,04	0,05	6,9	3,4	3,5	4	1	2	2	1
8929/400	34	24	0,16	0,08	0,13	22,0	3,9	18,1	4	0	2	0	2
8971/497	10	8	0,06	0,04	0,05	6,2	3,4	2,8	4	1	2	2	1

0 Very little effect  
1 Little effect

2 Moderate effect

3 Good effect  
4 Very good effect

Ts

Solartransmission

Rs

Solarreflection

Glazing F

Double glazing (4/16/4) space filled with 90% argon, G=0,64 U=1,1 low e coating in pos.3 according to EN 14501:2021

Glazing G

Solar control glazing (6/16/4) space filled with 90% argon, G=0,33 U=1,0 according to EN 14501:2021

Glazing H

Triple glazing (4/12/4/12/4) space filled with 90% argon, G=0,53 U=0,7 low e coating in pos.2 and pos.5 according to EN 14501:2021

Tv

Lighttransmission

Tv dir

Normal/normal light transmittance (direct)

Tv diff

Normal/diffuse light transmittance

Tuv

UV transmission

Data measured according to EN 410:2011 and EN 14500:2008

Classification of thermal and visual characteristics according to EN 14501:2021

Gtot were determined in IDA-ESBO(EQUA simulation) according to EN ISO 52022-3 (reference-case) EN 410 and ISO 15099

TECHNICAL PROPERTIES		
Openness factor	3-4%	EN 14501
Composition	100% solution dyed FR Polyester	-
Weight	220 gr/m <sup>2</sup>	EN 5114/82
Thickness	0,52 mm	-
Fire classifications		
Europe		UNE EN 13501 EN 13773
France	M1	NF P92-503
Italy	Classe 1	UNI 9177
Germany	B1	DIN 4102
UK		BS 5867
USA	Pass	NFPA 701
Wheelmark		IMO resolution MSC.307(88)-(2010 FTP Codeland IMO MSC /Circ.1102
Lightfastness	7-8/8	EN ISO 105 B04
Breaking resistance	Warp: 120 daN / Weft: 100 daN	EN ISO 13934
Elongation to break	Warp: 30% Weft: 35%	EN ISO 13934
Tearing strength	-	EN ISO 13937
SundaHus	A	sundahus.se
Byggvarubedomningen	accepteras	byggvarubedomningen.se

WIDTH: 325 cm

ROLL SIZE: 40 m

**MANUFACTURING GUIDANCE:**

Railroading possible

Ultrasonic

**CARE INSTRUCTIONS:**

Brush off

Wash with lukewarm water, a mild hand soap can be added in the water

SUITABLE FOR MOIST ATMOSPHERE: Yes

**ENVIRONMENT**

Starscreen placed outside the window stops up to 97% of the solar heat to reach the window. A lot of energy, especially for cooling, are saved and makes our Starscreen an environmental friendly product.