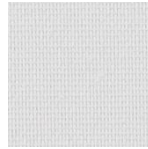


STARLET

✓ Produced of 100% recycled PET

✓ Good or very good night privacy

Openness factor: 0%
 Composition: 100% recycled PET
 Weight: 215 g/m²
 Thickness: 0,35 mm
 Fire reaction: M1 / B1 / C1 /
 NFPA 701



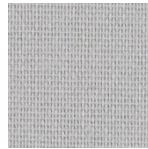
4898 snow



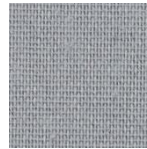
4899 perfect greige



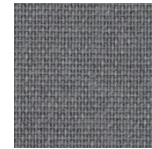
7616 chocolate



5108 grey haze



5770 french grey



6625 new york grey



5832 midnight black



OEKO-TEX®
 CONFIDENCE IN TEXTILES
 STANDARD 100

REACH
 compliant



SUNCONTROL PROPERTIES

	THERMAL FACTORS						OPTICAL FACTORS							
	Fabric		Fabric+Glazing G tot internal				Fabric							
	Rs	Ts	Glazing F G tot	Glazing G G tot	Glazing H G tot	Tv	Tv dir	Tv diff	Tuv	Glare Control Class	Night Privacy Class	Visual Contact Class	Daylight Utilisation Class	
4898	72	18	0,28	0,12	0,26	16,5	0,0	16,5	0	2	2	0	2	
4899	57	10	0,36	0,17	0,32	7,7	0,0	7,7	0	4	3	0	1	
5108	47	5	0,40	0,19	0,36	2,7	0,0	2,7	0	4	4	0	1	
5770	36	3	0,45	0,22	0,39	1,1	0,0	1,1	0	4	4	0	0	
5832	6	0	0,56	0,29	0,48	0,0	0,0	0,0	0	4	4	0	0	
6625	19	0	0,52	0,26	0,45	0,0	0,0	0,0	0	4	4	0	0	
7616*	20	1	0,51	0,26	0,45	0,0	0,0	0,0	0	4	4	0	0	

0 Very little effect
 1 Little effect

2 Moderate effect

3 Good effect
 4 Very good effect

Ts

Solartransmission

Rs

Solarreflection

Glazing F

Double glazing (4/16/4) space filled with 90% argon, G=0,64 U=1,1 low e coating in pos.3 according to EN 14501:2021

Glazing G

Solar control glazing (6/16/4) space filled with 90% argon, G=0,33 U=1,0 according to EN 14501:2021

Glazing H

Triple glazing (4/12/4/12/4) space filled with 90% argon, G=0,53 U=0,7 low e coating in pos.2 and pos.5 according to EN 14501:2021

Tv

Lighttransmission

Tv dir

Normal/normal light transmittance (direct)

Tv diff

Normal/diffuse light transmittance

Tuv

UV transmission

Data measured according to EN 410:2011 and EN 14500:2008

Classification of thermal and visual characteristics according to EN 14501:2021

Gtot were determined in IDA-ESBO(EQUA simulation) according to EN ISO 52022-3 (reference-case) EN 410 and ISO 15099

TECHNICAL PROPERTIES		
Openness factor	0%	EN 14500
Composition	100% recycled PET	-
Weight	215 gr/m ²	EN 12127
Thickness	0,35 mm	EN ISO 5084
Fire classifications		
Europe	C1	UNE EN 13501 EN 13773
France	M1	NF P92-503
Italy		UNI 9177
Germany	B1	DIN 4102
UK		BS 5867
USA	Pass	NFPA 701
Wheelmark		IMO resolution MSC.307(88)-(2010 FTP Codeland IMO MSC/Circ.1102
Acoustic Absorption	G-100 / $\alpha_w = 0,0$ / NRC = 0,0	EN 354/EN 11654/ASTM C423
Lightfastness	min. 5-6	EN ISO 105 B02
Breaking resistance	Warp: >70 daN / weft: > 45 daN	EN ISO 13934
Elongation to break	Warp: approx 13% Weft: approx 18%	EN ISO 13934
Tearing strength	-	EN ISO 13937
SundaHus	B	sundahus.se
Byggarbedömingen	undviks	byggvarubedomningen.se

WIDTH: 240 / 310 cm *7616 in 240cm only

ROLL SIZE: 40 m

MANUFACTURING GUIDANCE:

Length to drop recommended.

Railroading possible butt cupping may occur.

Cold cut

CARE INSTRUCTIONS:

Vacuum clean for regular maintenance

Brush off, Wipe gently with a damp cloth

Do not wash, rub or steam

Do not dry clean

SUITABLE FOR MOIST ATMOSPHERE: Yes

ENVIRONMENT

The SCS Indoor Advantage™ Gold certificate states a test regarding harmful emissions of fabrics and products in the interior. Fabrics certified by SCS contribute to a better room air quality. It is comparable to Greenguard certificate