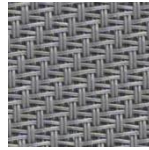


SERGE 10%

✓ Good visual contact with the outside

✓ Nice structure



001 001



001 010



010 010

Openness factor: 10%
 Composition:
 42% glassfibre / 58% PVC
 Weight: 490 g/m²
 Thickness: 0,83 mm
 Fire reaction: M1 / B1
 NFPA 701 / Classe 1

REACH
compliant

SUNCONTROL PROPERTIES

	THERMAL FACTORS					OPTICAL FACTORS							
	Fabric		Fabric+Glazing G tot internal			Fabric							
	Rs	Ts	Glazing F G tot	Glazing G G tot	Glazing H G tot	Tv	Tv dir	Tv diff	Tuv	Glare Control Class	Night Privacy Class	Visual Contact Class	Daylight Utilisation Class
001 001	16	11	0,08	0,05	0,07	10,4	9,1	1,3	10	0	1	4	1
001 010	10	10	0,08	0,05	0,06	10,1	9,0	1,1	10	0	1	4	1
010 010	5	10	0,08	0,05	0,06	9,6	8,8	0,8	9	0	1	4	1

0 Very little effect

1 Little effect

2 Moderate effect

3 Good effect

4 Very good effect

Ts

Solartransmission

Rs

Solarreflection

Glazing F

Double glazing (4/16/4) space filled with 90% argon, G=0,64 U=1,1 low e coating in pos.3 according to EN 14501:2021

Glazing G

Solar control glazing (6/16/4) space filled with 90% argon, G=0,33 U=1,0 according to EN 14501:2021

Glazing H

Triple glazing (4/12/4/12/4) space filled with 90% argon, G=0,53 U=0,7 low e coating in pos.2 and pos.5 according to EN 14501:2021

Tv

Lighttransmission

Tv dir

Normal/normal light transmittance (direct)

Tv diff

Normal/diffuse light transmittance

Tuv

UV transmission

Data measured according to EN 410:2011 and EN 14500:2008

Classification of thermal and visual characteristics according to EN 14501:2021

Gtot were determined in IDA-ESBO(EQUA simulation) according to EN ISO 52022-3 (reference-case) EN 410 and ISO 15099

TECHNICAL PROPERTIES		
Openness factor	10%	NBN EN 410
Composition	42% glassfibre / 58% PVC	-
Weight	490 gr/m ²	EN 12127
Thickness	0,83 mm	ISO 2286-3
Fire classifications		
Europe		UNE EN 13501 EN 13773
France	M1	NF P92-503
Italy	Classe 1	UNI 9177
Germany	B1	DIN 4102
UK	Pass	BS 5867
USA	Pass	NFPA 701
Wheelmark		IMO resolution MSC.307(88)-(2010 FTP Codeland IMO MSC /Circ.1102
Lightfastness	>7	EN ISO 105 B04
Breaking resistance	Warp: 312 daN / Weft: 200 daN	EN ISO 13934
Elongation to break	Warp: 4,7% Weft: 3,8%	EN ISO 13934
Tearing strength	Warp: 5,2 daN Weft: 4,9 daN	EN ISO 13937
SundaHus	C-	sundahus.se
Byggvarubedömingen	undviks	byggvarubedomningen.se

WIDTH: 270 cm

ROLL SIZE: 50 m

MANUFACTURING GUIDANCE:

Railroading possible

By heat, high frequency or ultrasonic welding

CARE INSTRUCTIONS:

Brush off, compressed air

Wash with lukewarm water, a mild hand soap can be added in the water

SUITABLE FOR MOIST ATMOSPHERE: Yes

